



WHAT'S ON AT THE LMC

Volume 12, Issue 9

DECEMBER 2011

Inside this issue:

Association of LMCs in Greater Manchester	4
Blue badge scheme	6
BMA 2012 research grants	5
Care Quality Commission Registration of General Practices	1
Cervical cytology training for GPs	5
Child protection reports	5
Claire Wand Fund	5
DWP Evaluation of the Statement of Fitness for Work	4
Flu vaccine procurement for 2012/13	5
Future ownership and management of PCT estate	2
GMC Consultations	4
GMC Good Medical Practice 2012	4
GP Registration Policy	1
GPC/BMA guidance	4
GPC/LMC regional roadshow	4
Health visiting discussion document	3
Hon. Secretary's report	2
Improving Adult Community Mental Health Services	3
Living with Sexuality and Cancer	6
LMC Locum List	6
LMC office closure during the Christmas Holiday	6
LMC Representation on other Groups	2
LMC/NHSM Liaison	2
Local services for heart and stroke patients	3
M/cr City Council – Health and Wellbeing Board	2
NHS Business Services Authority	4
Nurse Training courses in Minor Illnesses	6
Pension Planning	1
Practice nurse indemnity	5
Primary Care Access during the festive period	1
Red Eye Scheme from primary care optometrists	2
Royal Manchester Children's Hospital bed closure	3
Shared care guidelines	3
Statement of Fitness for Work	3
The Cameron Fund	5
The Doctors' Support	6
The GP Earnings and Expenses Enquiry Provisional	5

WHAT HAPPENED AT THE DECEMBER LMC MEETING

City-wide issues



Primary Care Access during the festive period

The LMC noted the misleading letter dated 28th November to General Practices in Greater Manchester from Mike Burrows and Raj Patel, Chief Executive and Medical Director of NHS Greater Manchester (which some had interpreted as requiring practices to open on Bank Holidays) which was subsequently clarified as requesting normal surgeries and full access to primary care on Wednesday, 28th to Friday, 30th December 2011. The LMC responded suggesting that it be consulted in future to avoid further miscommunication.

Practices are reminded of the LMC agreement with NHSM in September that normal access should be provided week commencing 19th December and as stated above, from Wednesday 28th to Friday, 30th December 2011 and from Tuesday 3rd to Friday 6th January 2012.

Care Quality Commission www.cqc.org.uk – Registration of General Practices

Ash Bakhat, LMC Chair and Carol Panton, Manager, attended a meeting for LMCs on 29th November and a copy of the handout is **attached**, along with Carol's report on the meeting. Also **attached** is a helpful paper "CQC responses to Family Doctor Association member questions". The important message is that practices should not sign up to any 3rd party services claiming to facilitate CQC registration as this is unnecessary as CQC do not yet know what the registration forms will look like. The LMC intends to hold an open meeting for GPs on this issue in Spring 2012.

GP Registration Policy

Jules Palfreyman, NHS Manchester Communications and Engagement Manager and Nick Harris, Manchester LINK attended the meeting to present "Guidance for GP Practices on eligibility and entitlement to NHS services by individuals from migrant communities" and a patient leaflet "Seeing a doctor -Your guide to registering with a GP practice in Manchester". Following minor amendments these will be issued by NHS Manchester to GP practices. The LMC supports these in principle as it is helpful to have some consistency in GP registration policies in Manchester practices, but some Members had concerns about the recommendation (which comes from NHS Counter Fraud) that practices should be requiring 2 types of documentary evidence before registering patients, as their practices do not require such evidence before registering patients at their own practices.

The LMC has produced the **attached** template letter for use by practices to refuse registration, as not all practices are aware of their contractual obligation to provide a letter of refusal to patients.

Pension Planning

The LMC hosted an event for Manchester GPs on 9th November, at which BMA Services gave a presentation on pensions and financial planning; and NHSM Contracts team were in attendance to advise GPs on retirement/24 hour retirement, prior to the 31st March 2012 changes.

WHAT HAPPENED AT THE DECEMBER LMC MEETING Continued ...

NHSM - Future ownership and management of PCT estate

Further to the October 2011 What's On, the LMC hosted a meeting on 16th November for practices in Health Centres as they need a lease to ensure the terms under their existing lease are transferred to their new "landlords". NHSM has commissioned Hempsons to draw up a generic lease for practices and, at the meeting, the practices decided to make a joint approach to a solicitor to negotiate with Hempsons on their behalf on the generic lease. Dr. Fuzz Ahmed, Moss Side Health Centre, is leading on this and we are currently waiting for clarification from Karen Thomasson as to the necessity for the solicitor acting for the practices to undertake searches etc, as the intention is to limit the costs for practices.

LMC Hon. Secretary's report

John Hughes reported on his attendance at the following

- **LMC Secretaries Conference** – on 1st December with addresses from Sir David Nicholson, Chief Executive, NHS and Mike Farrar, Chief Executive, NHS Confederation and Laurence Buckman, GPC Chair
- **Greater Manchester Sessional (Locum) GP meeting** on 7th December to encourage greater engagement between the LMC and Sessional GPs

Manchester City Council – Health and Wellbeing Board

Drs. Ash Bakhat and John Hughes, LMC Chair and Hon. Secretary, met with David Regan, Director of Public Health and Councillor Glynn Evans on 10th November to discuss LMC representation on the Manchester Health and Wellbeing Board. The likelihood is that the LMC (and other Local Representative Committees) will sit on a lower tier Committee which will feed into the Health and Wellbeing Board.

LMC/NHSM Liaison

The Liaison meeting was held on 26th October, when the main items discussed were:-

- Future ownership and management of PCT Estate
- EQOF
- Manchester Standard Assessment visits and action plans for practices

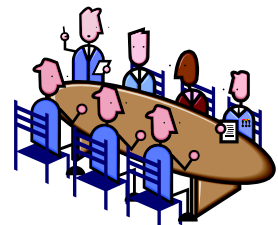
NHSM – Red Eye Scheme from primary care optometrists

The LMC supported the proposal to commission from 1st January 2012 an ophthalmic service for Red Eye from primary care optometrists and information will be sent to GPs about this from NHSM.

LMC Representation on other Groups

The following reports were received from Members and are available on request

Meeting	Member	Date
GP Information Governance Group	John Hughes	25.10.11
QOF Steering Group	Alison Hutton	09.11.11
Cervical Cytology Steering Group	John Hughes	11.11.11
EMIS Web Project Board	Vish Mehra	22.11.11
IM&T Board	Vish Mehra	29.11.11



Matters arising from the above Groups

- **Cervical Cytology** – John Hughes is aware of ongoing concerns that some patients who should have HPV testing are not being tested by Pennine Acute Lab and is continuing to work with the Lab and Sue Longden to address these problems. Please inform the Lab and John Hughes (via the LMC) of any continuing problems.
- **IM&T Board** – There are proposals to provide remote access for GPs, free of charge, using laptops/iPads and this will be piloted in the New Year. Cost of 3G access to be met by practices.

WHAT HAPPENED AT THE DECEMBER LMC MEETING continued ...

Statement of Fitness for Work

The LMC has been contacted by GPs expressing concern at the increasing number of requests for GP support/reports for patient appeals and in particular from CAB on behalf of patients. We are attempting to quantify the scale of the problem and would be grateful if you could inform the LMC whether or not you have noticed an increase in such requests, so that we can decide how to address this.

Central Manchester Foundation Trust

Health Visiting discussion document

The LMC was impressed by the discussion paper and will be feeding back it's strong support for Health Visitors to maintain the core duties of child development and assessment, family support and public health services (as currently, the majority of their time is spent on child protection issues) and to recommend closer working relationships with general practices. The LMC considered the following 3 options

- Option 1 – immediate remodelled services plus increase in establishment by 11.8 wte and review of band 7 roles
 - Option 2 – progressive remodelled services plus increase in establishment by 11.8 wte and review of band 7 roles
 - Option 3 – Controlled Trial approach in one district or service element incorporating increase in establishment.
- The LMC supported Option 1 but accepted that Option 2 may be the pragmatic option, with the proviso, as stated above, that Health Visitors should concentrate on the core duties for which they were trained.

Manchester Mental Health and Social Care Trust

(i) Shared Care Guidelines

• Drugs for alcohol withdrawal

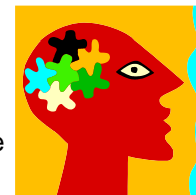
The LMC has requested a LES for GP involvement in the alcohol withdrawal SCG and are waiting for a response.

• Treatment of ADHD in adults

The LMC approved, in principle, an SCG for ADHD in adults which had been produced in order to commission a new service from February 2012 as currently, there is no service in Manchester

(ii) Improving Adult Community Mental Health Services in Manchester

Prof Carolyn Chew Graham and Dr. Ruth Thompson commented on the consultation document on behalf of the LMC (copies available on request from the LMC office).



Healthy Futures – Local services for heart and stroke patients – public consultation

Helen Hosker has kindly agreed to respond to the document, on behalf of the LMC. The document is available from <http://www.healthyfutures.nhs.uk/documents-2>

Locality issues

Royal Manchester Children's Hospital

The LMC discussed the closure of the Children's Hospital on 1st December and the refusal to accept GP referrals of seriously ill children (from 2 Central Manchester GPs) when GPs were advised to find beds elsewhere. The LMC's understanding of the responsibility of hospitals is that, even if they have no beds, they should accept seriously ill patients, assess and stabilise them and then find an alternative bed for transfer. The LMC has secured a copy of RMCH's escalation policy which does not include the necessity to inform GPs when there is a problem with capacity. The LMC is treating this as a Serious Untoward Incident and requesting an investigation by RMCH of what occurred on 1st December in terms of the safety of patients and also of the failure of communication with GPs. The LMC will keep you informed but would stress that if it is clinically necessary to refer seriously ill patients to hospitals, GPs should insist the hospital accepts patients as outlined above, as it is not the GP's responsibility to phone round other hospitals to try and find a bed.



WHAT HAPPENED AT THE DECEMBER LMC MEETING continued ...

Greater Manchester issues

Association of LMCs in Greater Manchester

30th November industrial action for pension changes

The Association produced a press release expressing concern about the DoH direction to Local Authorities and PCTs, requiring staff who were off sick on the day of action, to obtain a doctor's certificate. This was felt to be an inappropriate use of GP time that other patients could be using and the offer of some LAs and Trusts to pay their staff for such certificates was a waste of public money. The press release was reported by GP Magazine.

National issues

Department for Work and Pensions www.dwp.gov.uk

An evaluation of the Statement of Fitness for Work: Qualitative Research with GPs

available from http://statistics.dwp.gov.uk/asd/asd5/report_abstracts/rr_abstracts/rra_780.asp

GENERAL MEDICAL COUNCIL www.gmc-uk.org

(i) Good Medical Practice 2012

The LMC Officers will be considering and commenting on the draft Good Medical Practice (which has changed significantly from the current version) by the deadline of 10th February 2012

(ii) GMC's consultation documents

John Hughes has volunteered to comment on the following consultation documents

- **The GMC's role in continuing professional development: a Consultation** https://gmc.econsultation.net/econsult/consultation_Dtl.aspx?consult_Id=213&status=2&criteria=l
- **Consultation on the Licence to Practise Revalidation Regulations 2012** http://www.gmc-uk.org/Reval_consultation_doc_final.pdf_45154726.pdf

NHS Business Services Authority

GP Provider (and non-GP Provider) Certificate of Pensionable Pay

The certificate guidance, completion notes and FAQs are available from www.nhsbsa.nhs.uk/2529.aspx

GUIDANCE AND INFORMATION FROM THE GPC/BMA

GPC/LMC regional roadshows

Manchester LMC hosted the successful GPC North West Roadshow on 2nd November 2011. The Powerpoint presentation given by Richard Vautrey, Deputy GPC Chair, is available from the LMC office on request.

GPC/BMA guidance

The following were received and are **attached** for Defence Fund Levy subscribers, or are available via the BMA for Members at www.bma.org.uk

- **Focus On travel immunisations** – November 2011
- **Locum Agreements Guidance** – November 2011
- **QOF Quality and Productivity (QP) Accident and Emergency Indicators** – Guidance for PCTs and Practices, November 2011

The following were noted and are available to Defence Levy subscribers on request from the LMC office, or via the BMA for members at www.bma.org.uk

- **Social Determinants of Health – What Can Doctors Do** - October 2011
- **BMA national survey of GP opinion 2011**

GUIDANCE AND INFORMATION FROM THE GPC/ BMA continued...

The GP Earnings and Expenses Enquiry Provisional Report 2009/10

This information is needed in relation to GPs' seniority and is available from the LMC office on request.

Practice nurse indemnity

Following the Royal College of Nursing (RCN) announcement that indemnity cover for work undertaken by practice nurses as part of their employment will no longer be provided by the RCN indemnity scheme, GPC again reminds practices to check their indemnity arrangements to ensure that the work carried out by their practice nurses and all practice staff is appropriately covered.



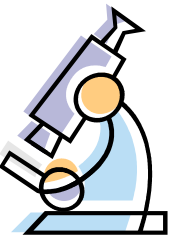
Flu vaccine procurement for 2012/13

The Department of Health has confirmed that even though a consultation has been held on the future procurement of flu vaccine, **GPs will remain responsible for ordering their vaccine for the flu vaccination programme for the winter of 2012/13.** The BMA responded to the consultation in August, highlighting their concerns about proposals to move to central procurement of seasonal flu vaccines in England. The formal response to this consultation is awaited.

Claire Wand Fund

If any GP would like to undertake research, or study for something that will improve their practice, or the wider community, then the Claire Wand Fund may be able to pay for some or all of the costs. Application to the Trustees is simple and the process will make it clear whether the Fund is likely to support you or not. This is a fund for GPs and is open to every GP. Go to <http://www.clairewand.org> to find out whether you are able to access this money set aside for GPs to improve their education for the benefit of patients.

BMA 2012 research grants



The BMA was among the first of the professional bodies to award grants and prizes to encourage and further medical research. Today, around ten research grants are administered under the auspices of the Board of Science, all funded by past bequests to the BMA. Grants totalling approximately £500,000 are awarded annually.

Applications are invited from medical practitioners and/or research scientists and are for either research in progress or prospective research.

The 2012 research grants will be available to apply online on the BMA website and the application deadline is 16th March 2012.

Subject specifications for each grant vary. For example, in 2012, research areas range from rheumatism and arthritis, cardiovascular disease and cancer to the uptake of preventative measures and the use of information and communication technologies in medicine. For more information on the grants on offer in 2012 and details of how to apply please see the research grant section of the BMA website at http://www.bma.org.uk/about_bma/awards_grants/researchgrants.jsp from 13th December 2011.

The Cameron Fund

Please see the **attached** flyer from the Cameron Fund, which is the only charity that solely assists GPs.

ADDITIONAL INFORMATION

Child protection reports

You are reminded that any Child Protection reports/invoices must be sent to Karen O'Brien at NHS Manchester on her nhs.net email address, as they contain patient identifiable data. Her email address is karen.obrien1@nhs.net

Cervical cytology training for GP

Please see the **attached** letter from Barbara Hakin, National Managing Director of Commissioning Development, which confirms that there are no contractual grounds for requiring all GPs to undertake update training, unless this is expressly agreed as part of local PMS or APMS contractual arrangements.

ADDITIONAL INFORMATION continued...

Changes to the Disabled Persons (Badges for Motor Vehicles) (England) Regulations 2000

Amendments to the Regulations were laid before Parliament on 9th November 2011 and subject to Parliamentary process:

- From 1st December 2011, amend the grounds by which a local authority may refuse to issue, or withdraw, a badge
- Introduce a new Blue Badge design for individual and organisational badges that are issued from 1st January 2012 onwards
- Enable local authorities to charge a maximum fee of £10 for the issue of a badge with a start date of 1st January 2012 onwards
- From 1st April 2012 require that eligibility under the "permanent and substantial disability" walking criterion (at regulation 4(2)(f) of the Principle Regulations) is confirmed by an independent mobility assessor, unless an applicant's eligibility is self-evident.

This means that after April 2012, GPs should only be asked for factual data, and this should not be the norm.

More information is available on these regulations at <http://www.dft.gov.uk/topics/access/blue-badge>

The Doctors' Support Network

The Doctors' Support Network is a registered charity that provides a confidential support network for doctors who have, or are currently suffering, any degree of "mental stress" including stress, anxiety and depression, bipolar disorder, self harming behaviour, psychoses, eating disorders, and personality disorders. Doctors do not need to be diagnosed or under the care of Mental Health services. The Supportline can be contacted on 0844 395 3010, and more information is available at www.dsn.org.uk

Nurse Training courses in Minor Illnesses

Mastercall, the Stockport and Trafford out of hours provider, will be running nurse training for minor illnesses from January 2012. Please see the **attached** flyer for details.

Living with Sexuality and Cancer

The Christie Hospital, in partnership with Cheshire and Wirral Partnership NHS Foundation Trust, is hosting a Conference on 20th January 2012, which is suitable for any doctor, nurse or healthcare professional working with patients who have had a diagnosis of cancer. See the **attached** flyer for details.

LMC Locum List

Please see the **enclosed** amendments to the locum list, for the attention of the Practice Manager.

LMC OFFICE CLOSURE DURING THE CHRISTMAS HOLIDAY

Please note that the LMC office will **close at its usual time of 3pm on Friday 23rd December 2011 and re-open on Tuesday 3rd January 2012**. Any **urgent** matters that arise during Wednesday 28th to Friday 30th December may be raised with LMC Officers, as follows

- Dr. Ash Bakhat (LMC Chairman) at 0161 375 1000 available in the surgery on the mornings of Thursday 29th & Friday 30th December
- Dr. John Hughes (LMC Hon. Secretary) at 0161 721 4865 available in the surgery on Thursday 29th & Friday 30th December (and practice can pass urgent messages to him on Wednesday 28th December)
- Dr. Stephen Dean (LMC Treasurer) at 0844 477 8670 available in the surgery on morning of Wednesday 28th December and all day Thursday 29th and Friday 30th December



For non-urgent issues, please leave a message on the LMC answer-phone and we will respond once the office has re-opened.

MANCHESTER LOCAL MEDICAL COMMITTEE

Oak House,
47 Graham Street,
Beswick,
Manchester, M11 3BB

Phone: 0161 223 8974
Fax: 0161 231 6189

Website: www.manchesterlmc.co.uk

Email: manchester-lmc@btconnect.com
cpanton_mlmc@btconnect.com
p.steel_mlmc@btconnect.com
l.stevenson_mlmc@btconnect.com

**You are invited to contribute
your views and influence
debate by contacting your
constituent LMC member
(details on the LMC Website)
or direct contact with the
LMC office**

